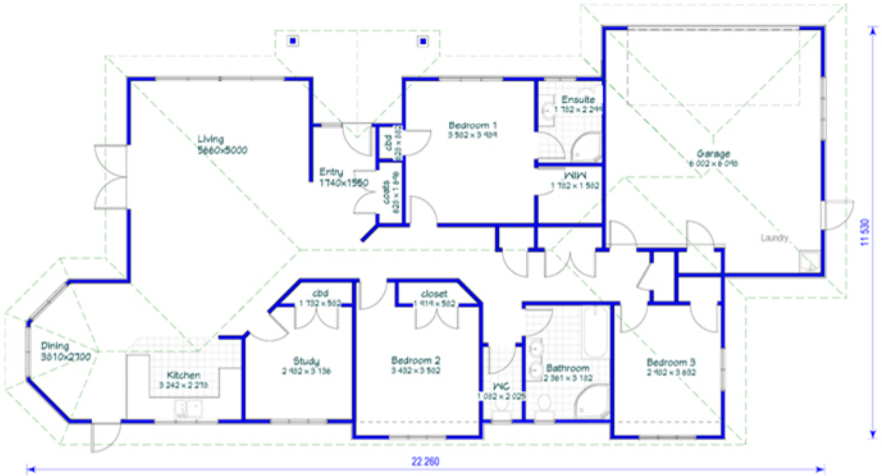




Perspective



Floor Plan

**BL 200G**

Area:	200m <sup>2</sup>
Page:	1 of 3
Date:	



**Elevation 1**



**Elevation 2**



**Elevation 4**



**Elevation 3**

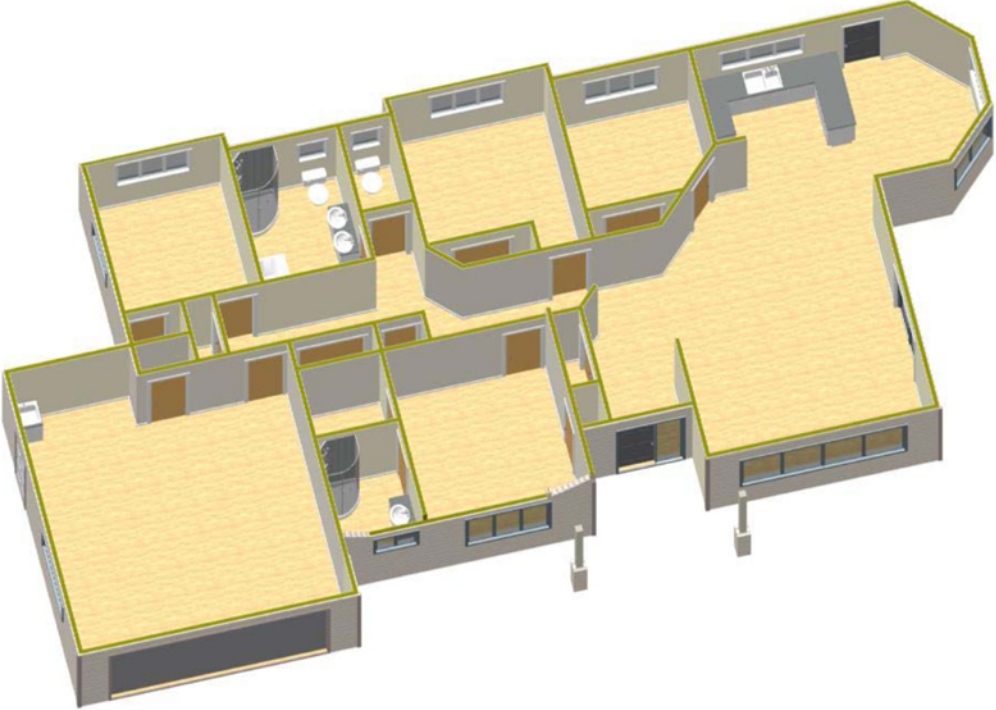


**G.Jakes Construction Ltd**  
**PO Box 15075**  
**Dinsdale**  
**Hamilton**

**Phone: 027 493 0132**

**Office +64 7 829 8928**

**FAX: +64 7 829 8563**



*Floor Overview*

Area:	200m <sup>2</sup>
Page:	3 Of 3
Date:	