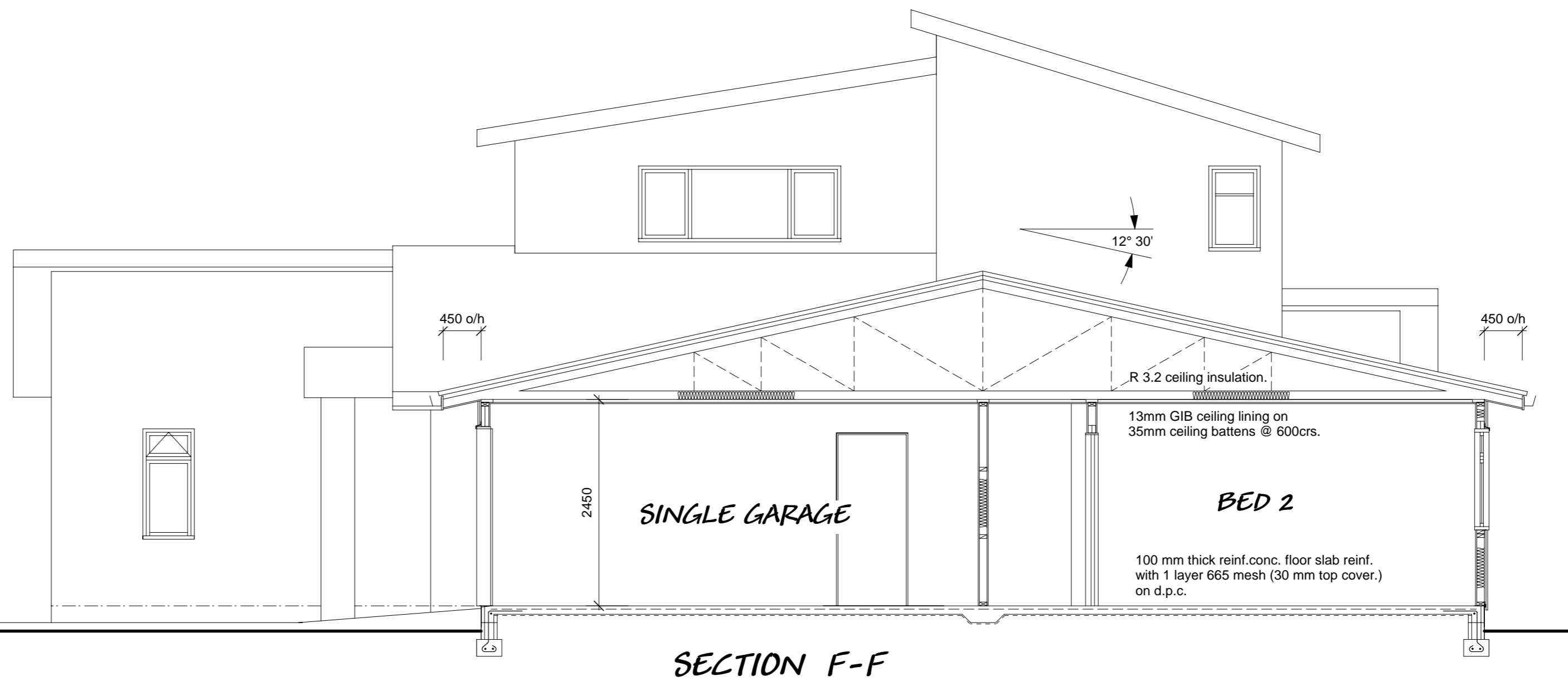
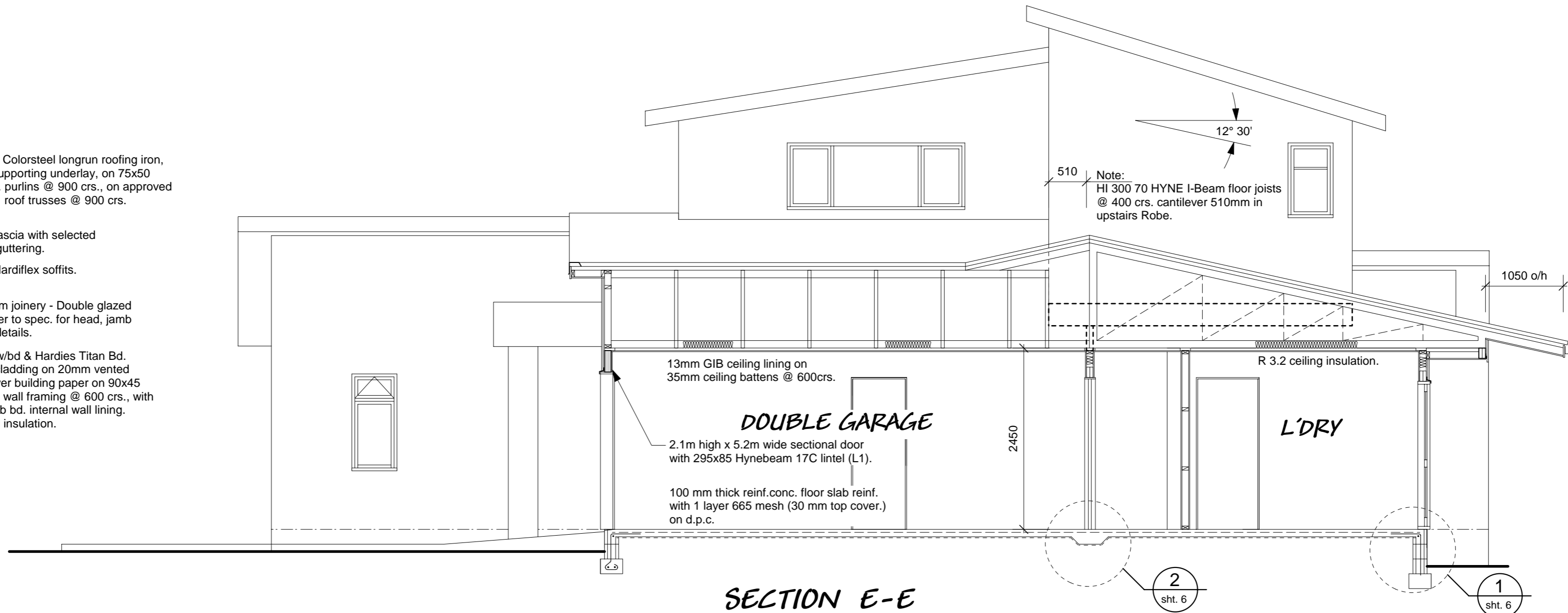


Selected Colorsteel longrun roofing iron, on self supporting underlay, on 75x50 H1.2 tan. purlins @ 900 crs., on approved gangnail roof trusses @ 900 crs.

Timber fascia with selected exterior guttering.  
4.5mm Hardiflex soffits.

Aluminium joinery - Double glazed  
N.B. Refer to spec. for head, jamb and Sill details.

Hardies w/bd & Hardies Titan Bd. exterior cladding on 20mm vented cavity, over building paper on 90x45 H1.2 tan. wall framing @ 600 crs., with 10mm Gib bd. internal wall lining. R2.2 wall insulation.



Selected Colorsteel longrun roofing iron, on self supporting underlay, on 75x50 H1.2 tan. purlins @ 900 crs., on approved gangnail roof trusses @ 900 crs.

Timber fascia with selected exterior guttering.  
4.5mm Hardiflex soffits.

Aluminium joinery - Double glazed  
N.B. Refer to spec. for head, jamb and Sill details.

Hardies w/bd & Hardies Titan Bd. exterior cladding on 20mm vented cavity, over building paper on 90x45 H1.2 tan. wall framing @ 600 crs., with 10mm Gib bd. internal wall lining. R2.2 wall insulation.

**Don Cowie**  
**Draughting &**  
**Design Services Ltd**  
N.Z.C.E.

20 Waimarie Street Hamilton  
Ph. 07 847 8864 Mobile 025 6041 392  
Email: dcowie\_design@hotmail.com

**PROPOSED NEW HOUSE FOR JAKES CONSTRUCTION LTD**  
**AT LOT 4, DP 404306, 99A Highbrook Way**

REVISION: DATE: REVISION NOTE:

**SECTIONS E & F**

DRAWN	CHECKED	DATE	SCALE	JOB No.
S. Fowler	D. Cowie	October 2008	1:50	820

DWG No.	<b>8</b>
REV	OF 9