

Selected Colorsteel longrun roofing iron, on self supporting underlay, on 75x50 H3.1 tan. purlins @ 900 crs., on 240x45 H3.1 tan. Hyne Edgebeam rafters @ 600 crs. 90x45 H3.1 tan. eaves outriggers @ 600 crs.

Timber fascia with selected exterior guttering.
4.5mm Hardiflex soffits.

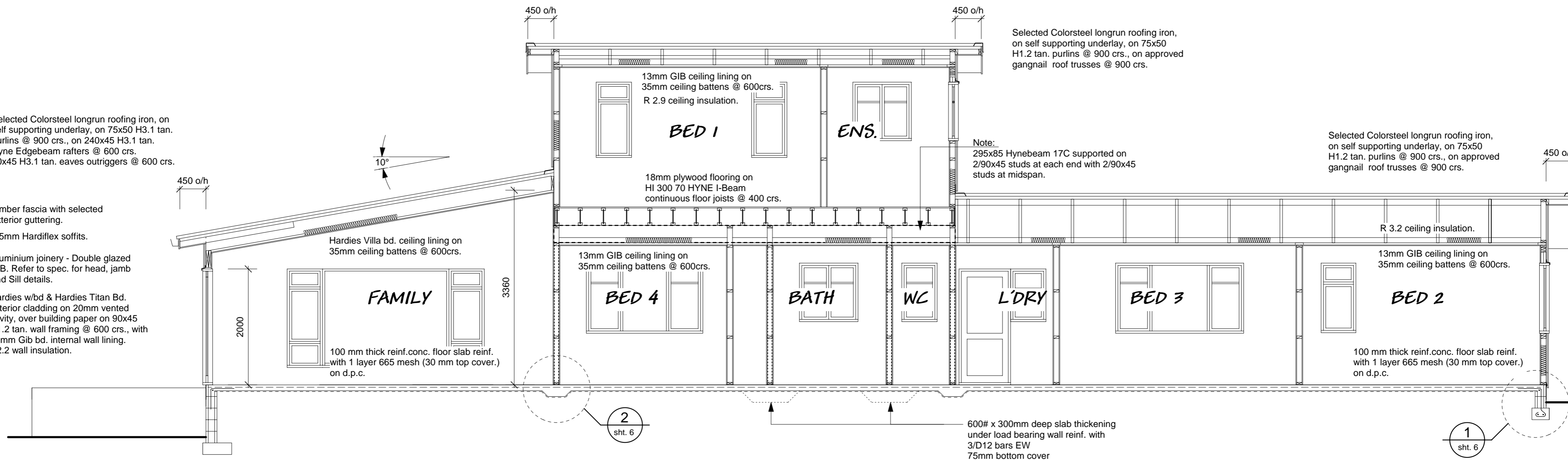
Aluminium joinery - Double glazed N.B. Refer to spec. for head, jamb and Sill details.

Hardies w/bd & Hardies Titan Bd. exterior cladding on 20mm vented cavity, over building paper on 90x45 H1.2 tan. wall framing @ 600 crs., with 10mm Gib bd. internal wall lining. R2.2 wall insulation.

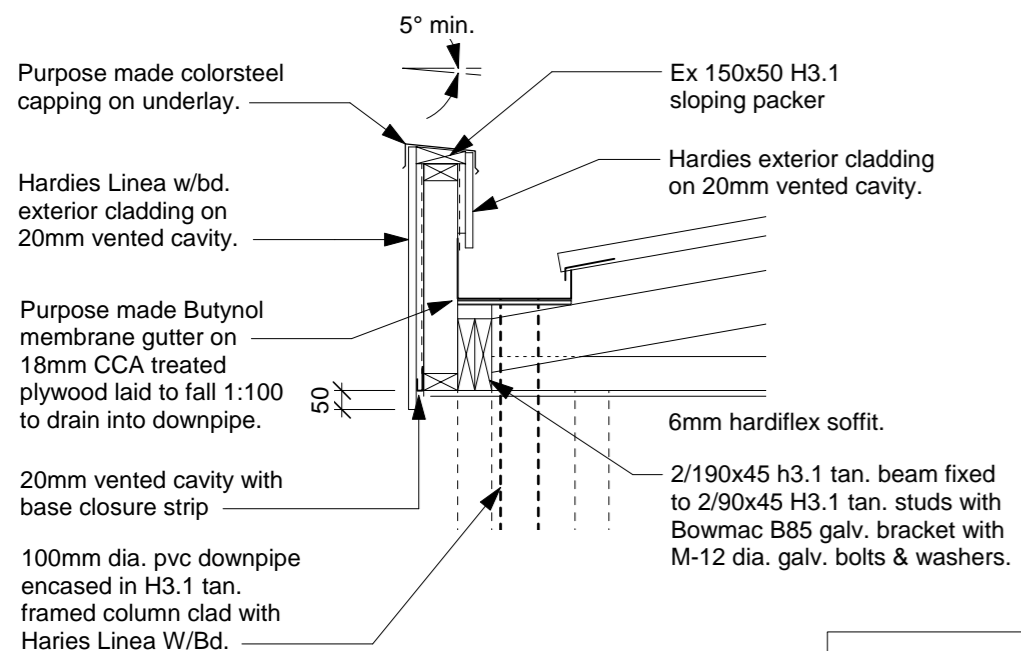
Selected Colorsteel longrun roofing iron, on self supporting underlay, on 75x50 H1.2 tan. purlins @ 900 crs., on approved gangnail roof trusses @ 900 crs.

Note:
295x85 Hynebeam 17C supported on 2/90x45 studs at each end with 2/90x45 studs at midspan.

Selected Colorsteel longrun roofing iron, on self supporting underlay, on 75x50 H1.2 tan. purlins @ 900 crs., on approved gangnail roof trusses @ 900 crs.



SECTION C-C

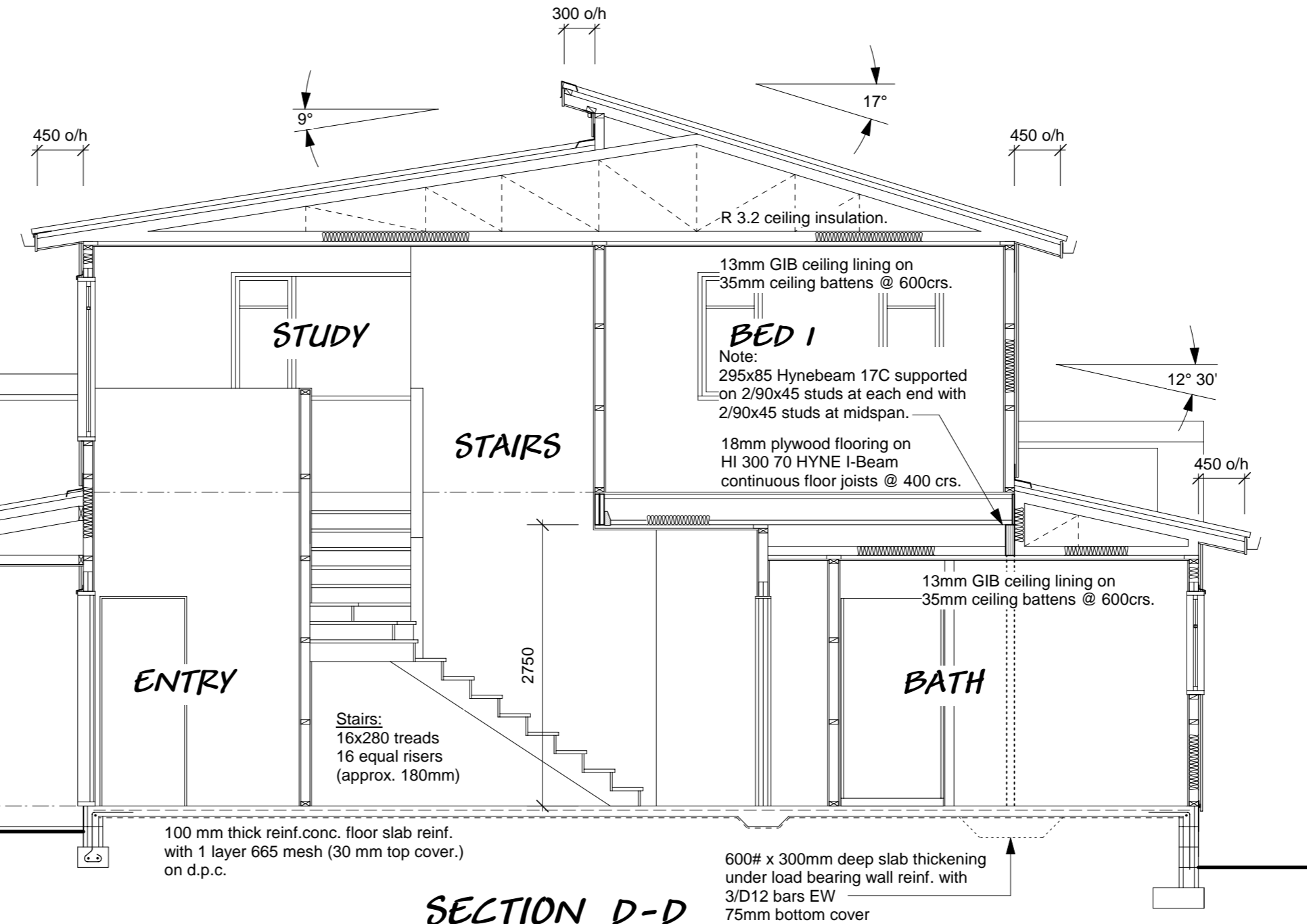


Entry Details

Note: Provide eaves flashing where roof pitch < 10 degrees

Selected Colorsteel longrun roofing iron, on self supporting underlay, on 75x50 H3.1 tan. purlins @ 900 crs., on 140x45 H3.1 tan. rafters @ 900 crs.

Note:
300mm wide x 75mm min. deep purpose made internal gutter laid to fall @ 1:100 on 12mm tan. plywood backing. Provide 75mm over flow at end of gutter as shown.



SECTION D-D

Selected Colorsteel longrun roofing iron, on self supporting underlay, on 75x50 H1.2 tan. purlins @ 900 crs., on approved gangnail roof trusses @ 900 crs.

Timber fascia with selected exterior guttering.
4.5mm Hardiflex soffits.

Aluminium joinery - Double glazed N.B. Refer to spec. for head, jamb and Sill details.

Hardies w/bd & Hardies Titan Bd. exterior cladding on 20mm vented cavity, over building paper on 90x45 H1.2 tan. wall framing @ 600 crs., with 10mm Gib bd. internal wall lining. R2.2 wall insulation.

Don Cowie
Draughting &
Design Services Ltd
N.Z.C.E.

20 Waimarie Street Hamilton
Ph. 07 847 8864 Mobile 025 6041 392
Email: dcowie_design@hotmail.com

PROPOSED NEW HOUSE FOR JAKES CONSTRUCTION LTD
AT LOT 4, DP 404306, 99A Highbrook Way

A 8/10/08 Entry parapet detail added.
REVISION: DATE: REVISION NOTE:

SECTIONS C & D				
DRAWN	CHECKED	DATE	SCALE	JOB No.
S. Fowler	D. Cowie	October 2008	1:50	820

DWG No. **7**
A REV
OF 9